

RAIDON

iT2771-S3 快速安裝導引

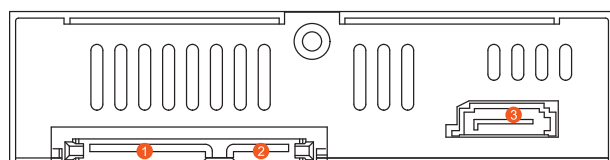
產品示意圖與配件表

前視圖



- 1 LED指示燈
- 2 硬碟抽取盒把手
- 3 頂出按鍵
- 4 硬碟抽取盒鑰匙孔

背視圖



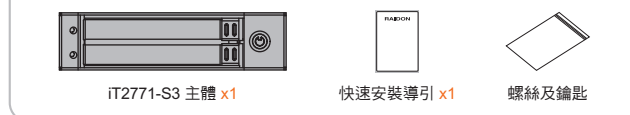
- 1 SATA 15Pin 電源輸入埠
- 2 硬碟位置 1 SATA 連結埠
- 3 硬碟位置 2 SATA 連結埠

V1.1 (Jun. 2017)

1

打開包裝外盒後，包裝內容應包含下列組件：

產品配件表



請先確認相關配件與產品本身是否有受損或是缺少配件，若有任何疑問，請與您的經銷商或業務人員聯絡。

燈號說明

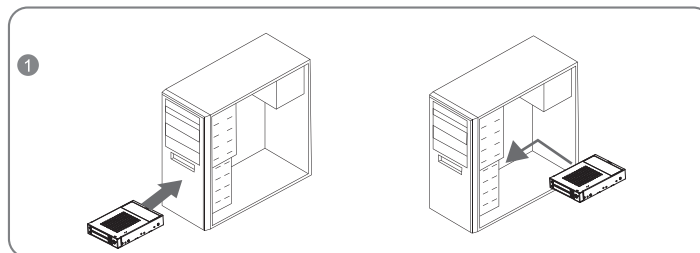
狀態	LED 指示燈
無硬碟	紅燈恆亮
資料存取	紫燈閃爍
硬碟閒置	紫燈恆亮

註：LED 指示燈之燈號為安裝 HDD 時顯示的燈號；若安裝的是 SSD，則燈號會因廠牌不同而有變化。

硬體安裝

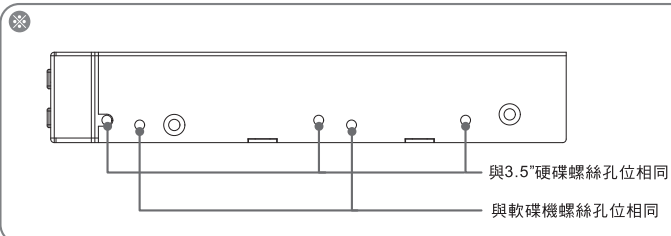
請參照下列步驟，完成 iT2771-S3 的硬體安裝：

1. 將主體裝置在機殼上，連接相關連接線，並確認固定螺絲是否鎖上。

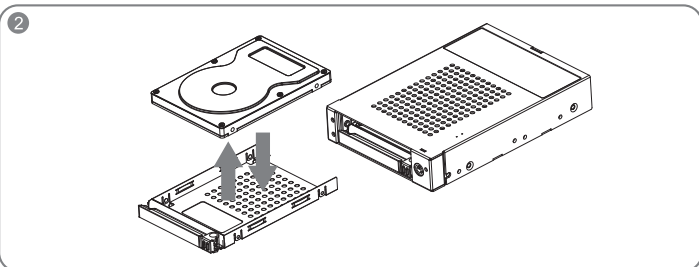


2

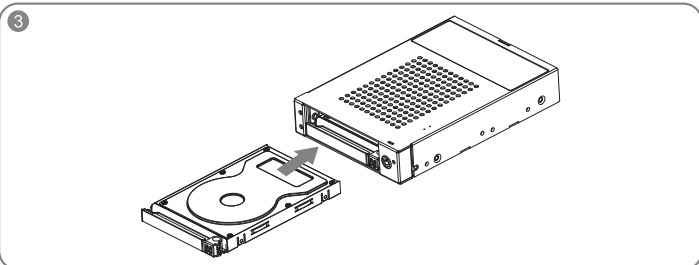
※ 螺絲孔位說明



2. 將您的硬碟安裝至抽取盒上。



3. 確認完成後請插回抽取盒，並確認取盒確實插入且固定在適當位置。



4. 硬體安裝完成。您可開啟電源進行相關設定與應用。
5. 完成。你的作業系統將會自行辨識硬體，辨識成功後請先完成硬碟格式化，完成後即可使用。

3

產品使用注意事項

1. 本系統允許使用不同廠牌的硬碟。但如果要獲得更好的效能，我們強烈建議使用相同廠牌型號的硬碟。
2. 請確保使用的硬碟是不含壞軌的，以避免當其中一顆硬碟發生故障時，可能導致系統當機或所有資料遺失。
3. 硬碟格式化後，iT2771-S3 的總使用儲存容量或許會與硬碟容量加總後的有所不同。
4. 強烈建議除了使用 iT2771-S3 的資料儲存功能外，請針對重要資料備份到另一個儲存裝置上或遠端備份，雙重備份您重要的資料。若您儲存在 iT2771-S3 的資料損毀或遺失，RAIDON 將不負任何的責任。

感謝您使用 銳銓科技股份有限公司 的產品。
本手冊裡的資訊在出版前雖然已經被詳細確認，但實際產品規格將以出貨時為準；任何的產品規格或相關資訊更新，請您直接上 www.RAIDON.com.tw 網站查詢，或是直接與您的業務聯絡窗口聯繫，本公司將不另行通知。

如果您對 銳銓科技 的產品有任何疑問，或是想獲得最新產品訊息、使用手冊或韌體，請您聯絡 supporting@raidon.com.tw，我們將儘速回覆您。

本說明相關產品內容歸 銳銓科技股份有限公司 版權所有

4

RAIDON

iT2771-S3 Quick Setup Guide

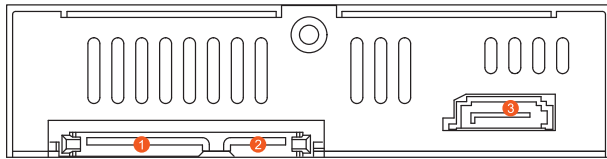
Product Illustration and Parts List

Front View



- 1 LED Indicator
- 2 HDD enclosure handle
- 3 HDD Tray Ejection
- 4 HDD enclosure keyhole

Rear View



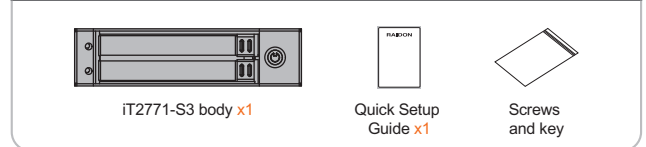
- 1 SATA 15 PIN Power Connector
- 2 Hard disk location 1 SATA 7 pin connector
- 3 Hard disk location 2 SATA 7 pin connector

V1.1 (Jun. 2017)

1

The following items should be inside the package upon opening:

產品配件表



Please check the included parts and the product itself for any damage or missing parts. If you have any questions, please contact the retailer or sales representative.

The Indication of HDD Status

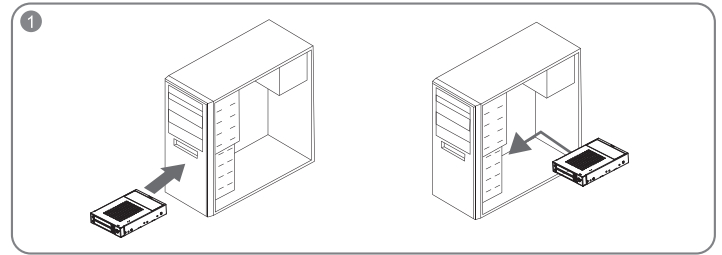
Status	LED
No HDD detected	Red light always on
Data access	Purple light Flashing
HDD idle	Purple light always on

※ LED Indication design is based upon users to use HDD products. And in case if you use SSD, the Indication will be varied by different SSD products.

Hardware Installation

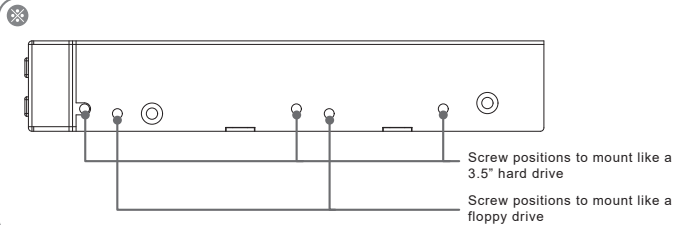
Please follow the steps below to complete the iT2771-S3 hardware setup process:

1. Install the product unit into the computer chassis and make the necessary connections and mount the product unit properly and securely to the bay position desired.

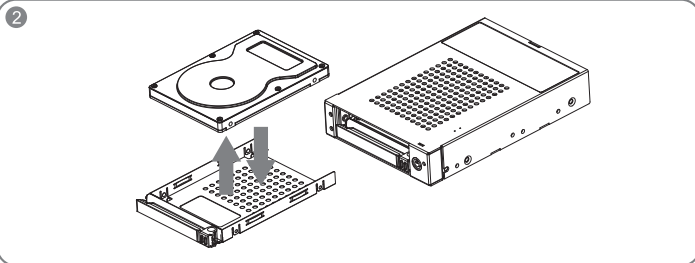


2

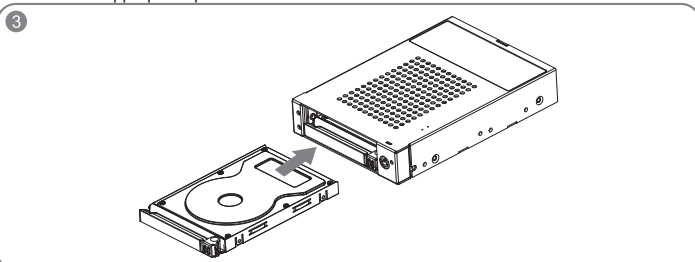
※ Mounting Positions



2. Mount the hard drive onto the removable tray.



3. Re-insert the removable tray when completed and make sure the tray is securely inserted into the appropriate position.



4. When hardware installation is completed, you can turn on the power of the main unit to proceed with relevant settings and applications.

5. Installation completed. Your operating system should automatically detect the hard drives within. Please proceed to format the drives. Once formatting is completed, you may then start to operate the device.

3

Important Notice

1. The product allows the user to simultaneously utilize two hard drives manufactured by different companies. However, if the user expects better efficiency, we strongly recommend the users to use hard drives manufactured by the same manufacturer.
2. Before a new HDD is installed in the iT2771-S3, please make sure that there are no bad tracks or defects to avoid data loss.
3. The actual storage capacity of iT2771-S3 recognized by the system may differ from the total capacity stated on the hard drives combined once the drives have been formatted.
4. We strongly recommend backing up important data stored on the iT2771-S3 to another storage device or a remote site. RAIDON will not be held liable for the damage or loss of data you stored on the iT2771-S3.

Thank you for choosing this RAIDON product.

The information provided in this manual was checked before publication, but the actual product specifications may have changed before shipping. Latest product specifications and updates can be found at www.RAIDON.com.tw or through your sales representative. No separate notifications will be provided by our company.

If you have any questions about RAIDON products or would like to receive the latest product information, instruction manuals, or firmware, please contact sales1@raidon.com.tw for assistance.

All product-related content in this manual are copyrighted by RAIDON TECHNOLOGY, INC.

4